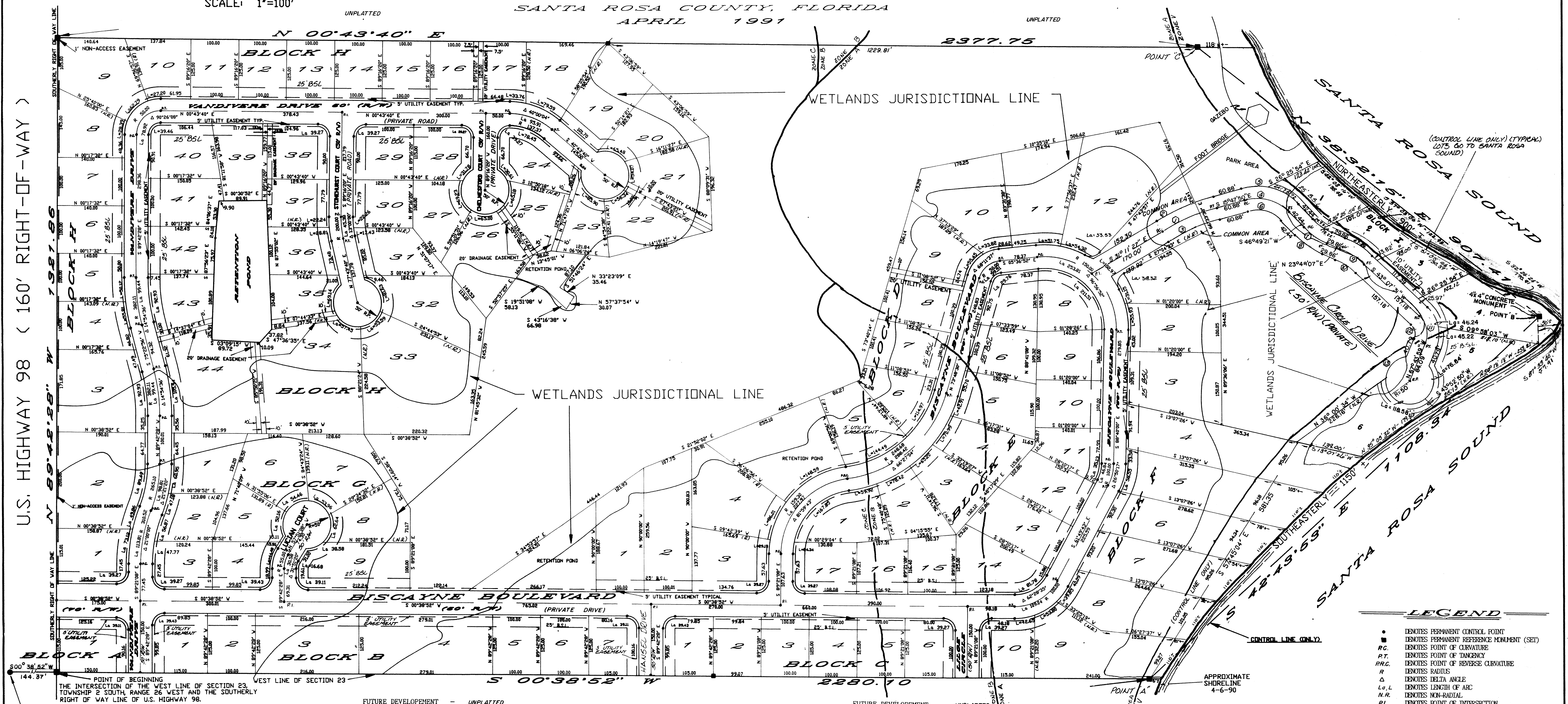
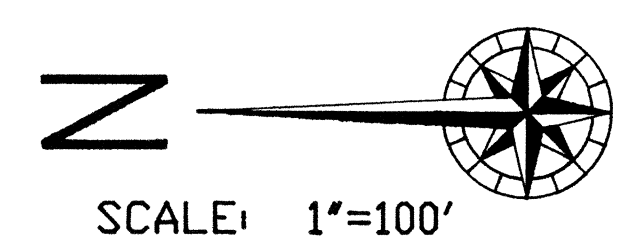


BISCAYNE POINTE

SOUTHERN SURVEYING, INC.
LAND SURVEYORS • LAND PLANNERS

(904) 939-4299 1900 S. Hwy. 87 Suite J. Navarre, FL 32566

A PLANNED UNIT DEVELOPMENT
A PORTION OF SECTION 23
TOWNSHIP 2 SOUTH
RANGE 26 WEST
SANTA ROSA COUNTY, FLORIDA
APRIL 1991



EXISTING 3/4" PIPE AT THE NORTHWEST CORNER OF SECTION 23, TOWNSHIP 2 SOUTH, RANGE 26 WEST.

CURVE TABLE

LOT	RADIUS	DELTA	ARC	CHORD	CHORD BEARING
BLOCK A					
1	25.00	89°38'40"	39.11	35.25	S45°28'12"W
BLOCK B					
1	25.00	90°21'20"	39.43	35.46	S44°31'48"E
7	25.00	89°38'40"	39.11	35.25	S45°28'12"W
BLOCK C					
1	25.00	90°21'20"	39.43	35.46	S44°31'48"E
6	25.00	90°00'00"	39.27	35.36	S45°38'52"W
BLOCK D					
3	25.00	90°00'00"	39.27	35.36	S44°21'08"E
3	184.30	09°03'44"	29.15	29.12	S84°49'16"E
4	184.30	26°44'21"	86.01	85.23	S66°55'14"E
5	223.68	37°00'23"	144.49	141.97	S25°51'30"E
6	223.68	29°26'41"	114.97	113.68	S59°05'10"E
9	75.00	42°21'30"	55.45	54.20	S52°37'45"E
10	75.00	25°50'07"	33.82	33.53	S18°31'57"E
11	175.00	16°56'33"	51.75	51.56	S02°51'25"W
12	25.00	76°50'32"	33.53	31.07	S09°18'41"E
12	175.00	17°47'02"	54.32	54.10	S20°13'05"W

CURVE TABLE

LOT	RADIUS	DELTA	ARC	CHORD	CHORD BEARING
BLOCK E					
1	134.30	71°36'33"	167.85	157.14	S43°09'49"E
1	273.68	12°32'40"	59.92	59.80	S13°37'45"E
2	273.68	16°25'03"	78.42	78.15	S28°06'37"E
3	273.68	13°38'59"	65.20	65.05	S43°08'38"E
4	273.68	14°51'43"	70.99	70.79	S57°23'59"E
5	273.68	08°59'00"	42.91	42.87	S69°19'20"E
7	25.00	68°11'37"	29.76	28.03	S39°42'42"E
8	125.00	96°56'52"	211.51	187.16	S42°51'34"W
11	75.00	26°50'17"	35.13	34.81	S75°14'52"E
14	75.00	62°28'35"	81.78	77.79	S30°35'26"E
17	25.00	90°00'00"	39.27	35.36	N45°38'52"E
17	134.30	10°23'03"	24.34	24.31	S84°09'37"E
BLOCK F					
1	25.00	90°07'04"	39.32	35.39	S72°07'35"E
1	175.00	10°11'55"	31.15	31.11	N67°55'21"E
2	175.00	18°18'42"	55.93	55.69	N82°10'30"E
5	125.00	26°50'17"	58.55	58.02	S75°14'52"E
8	125.00	18°15'58"	39.85	39.68	S52°41'45"E
9	125.00	24°39'38"	53.80	53.39	S31°13'58"E
10	25.00	90°00'00"	39.27	35.36	S44°21'08"E
10	125.00	12°32'59"	42.65	42.44	S09°07'41"E

CURVE TABLE

LOT	RADIUS	DELTA	ARC	CHORD	CHORD BEARING
BLOCK G					
1	290.10	12°02'16"	60.95	60.84	S83°41'25"E
2	290.10	09°19'06"	47.18	47.13	S73°00'49"E
2	285.52	11°24'44"	56.78	56.87	S74°03'36"E
3	285.52	09°35'10"	47.77	47.71	S84°33'39"E
3	25.00	90°00'00"	39.27	35.36	N45°38'52"E
4	25.00	90°21'20"	39.43	35.46	S44°31'48"E
4	80.00	31°51'20"	44.48	43.91	S73°46'48"E
5	50.00	59°46'15"	52.16	49.83	S87°58'01"E
6	50.00	62°24'24"	54.46	51.81	S26°52'41"E
7	50.00	61°50'01"	53.96	51.38	S35°14'32"W
8	50.00	71°46'49"	62.64	59.11	N45°28'12"E
9	25.00	89°38'40"	39.11	35.25	S73°46'48"E
9	30.00	31°51'20"	16.68	16.47	N19°57'27"W
9	50.00	44°12'34"	38.58	37.63	
BLOCK H					
1	25.00	90°00'00"	39.27	35.36	S44°21'08"E
2	335.52	12°29'11"	73.12	72.97	S83°06'33"E
2	240.10	21°21'20"	49.86	49.81	S72°36'31"E
3	357.11	14°54'36"	88.97	89.49	N79°01'45"E
3	357.11	07°51'19"	92.67	92.67	N82°50'14"E
4	407.11	07°51'19"	55.81	55.77	N79°18'36"E
5	407.11	07°03'17"	50.12	50.09	N86°45'54"E
8	75.00	21°41'18"	28.39	28.22	S78°51'49"E
9	75.00	47°58'05"	62.79	60.97	S44°02'08"E

CURVE TABLE

LOT	RADIUS	DELTA	ARC	CHORD	CHORD BEARING
BLOCK I					
10	75.00	20°46'45"	27.20	27.05	S09°39'43"E
17	162.37	11°54'47"	33.76	33.70	S06°41'04"W
18	162.37	28°05'13"	79.59	78.80	S26°41'04"W
20	50.00	75°02'04"	65.48	60.90	S18°14'42"W
21	50.00	61°57'35"	54.07	51.47	S86°44'32"W
22	50.00	64°33'39"	56.34	53.41	N29°59'52"E
23	50.00	98°26'03"	85.90	75.72	N51°29'59"E
24	25.00	90°00'00"	39.27	35.36	S44°16'20"E
24	50.00	35°04'35"	30.61	30.13	S48°15'58"W
24	112.37	40°00'00"	78.45	76.87	S20°43'40"W
25	50.00	74°41'27"	65.18	60.66	N76°51'02"W
26	50.00	74°29'04"	65.00	60.52	N02°15'46"W
27	50.00	79°19'54"	69.23	63.83	N74°38'43"W
28	25.00	90°00'00"	39.27	35.36	S45°43'40"W
28	50.00	36°25'02"	31.78	31.25	N47°28'49"E
29	25.00	90°00'00"	39.27	35.36	S44°16'20"E
30	175.00	07°17'26"	22.26	22.25	N87°04'53"E
31	175.00	05°42'34"	17.43	17.42	N80°35'01"E
32	50.00	93°32'28"	81.63	72.86	S64°29'54"W
33	50.00	61°24'27"	53.59	51.06	N38°01'48"W
34	50.00	65°49'51"	57.45	54.34	N25°35'22"E
35	50.00	79°13'43"	69.14	63.76	N81°52'56"W
36	225.00	07°20'11"	28.81	28.79	N81°23'46"E
37	225.00	05°39'48"	22.24	22.23	N87°53'45"E
38	25.00	90°00'00"	39.27	35.36	S44°21'08"E
38	25.00	90°00'00"	39.27	35.36	S44°21'08"E
40	425.00	90°26'08"	39.46	35.49	S42°20'24"E
43	357.11	14°54'36"	92.93	92.67	N82°50'14"E
44	407.11	14°54'36"	105.94	105.64	N82°50'14"E

CURVE TABLE

LOT	RADIUS	DELTA	ARC	CHORD	CHORD BEARING
BLOCK J					
1	118.45	36°37'36"	75.72	74.44	S28°30'27"W
1	122.32	14°01'10"	29.93	29.86	S39°48'46"W
2	122.32	09°00'10"	19.22	19.20	S28°18'09"W
2	201.21	19°19'25"	67.86	67.54	S33°27'49"W
4	75.79	34°57'24"	46.24	45.53	S60°36'15"W
5	75.79	34°51'08"	45.22	44.55	N84°49'31"W
5	50.00	88°03'08"	76.84	69.50	N83°42'11"W
6	50.00	135°52'58"	118.58	92.68	N28°15'46"E

BISCAYNE CIRCLE DRIVE CURVE DATA

CURVE #	RADIUS	DELTA	ARC	CHORD	CHORD BEARING
1	454.61	15°23'37"	122.14	121.77	S23°29'38"E
2	479.61	15°23'37"	128.86	128.47	S23°29'38"E
3	429.61	15°23'37"	115.42	115.08	S23°29'38"E
4	93.45	62°37'14"	102.13	97.12	S15°30'47"W
5	118.45	25°59'21"	53.73	53.27	S02°48'10"E
6	68.45	62°37'14"	74.81	71.14	S15°30'47"W
7	147.32	23°01'14"	38.79	38.79	S35°18'44"W
8	172.32	23°01'14"	69.24	68.77	S35°18'44"W
9	176.21	19°19'25"	59.43	59.15	S33°27'49"W
10	151.21	19°19'25"	51.00	50.76	S33°27'49"W
11	50.79	69°08'28"	61.29	57.64	S77°41'46"W
12	25.79	69°08'28"	31.12	29.27	S77°41'46"W
13	50.00	76°03'50"	66.38	61.61	N45°46'02"W

- LEGEND
- DENOTES PERMANENT CONTROL POINT
 - ◻ DENOTES PERMANENT REFERENCE MONUMENT (SET)
 - RC DENOTES POINT OF CURVATURE
 - RT DENOTES POINT OF TANGENCY
 - R DENOTES POINT OF REVERSE CURVATURE
 - R DENOTES RADIUS
 - Δ DENOTES DELTA ANGLE
 - Lo, L DENOTES LENGTH OF ARC
 - N.R. DENOTES NON-RADIAL
 - RI DENOTES POINT OF INTERSECTION
 - B.S.L. DENOTES BUILDING SETBACK LINE
 - RP DENOTES RADIUS POINT
 - R/W DENOTES RIGHT OF WAY

SHEET 2 OF 2